

Wells Hill Radstock



Rent: £8,000PA

A First Floor Office Suite within the Heart of Radstock

Total Area 722 sq. ft / 67.1 sq. m

Commercial **Sales & Leasing**

First Floor Office Suite, 4-5 Wells Hill, Radstock, BA3 3RN

First Floor Office Space To Let Approx. 722 sq. ft / 67.1 sq. m

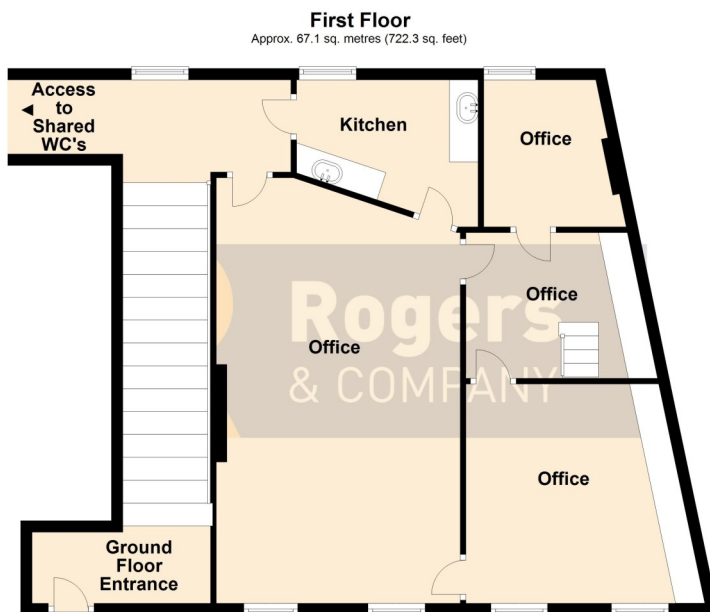
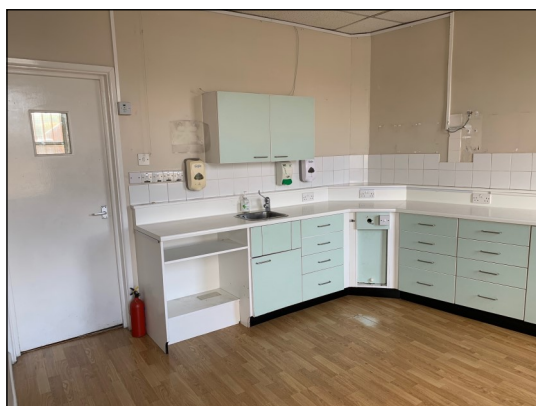
Located within the heart of Radstock, this first floor suite is segregated into a large central office and three ancillary rooms, there is a kitchen type room and large loft storage area.

These premises are owned by the Radstock Cooperative, a £120.00 PA (23/24) Service Charge is in place for the cleaning of the communal areas including the staff toilets. A single parking bay and disabled parking to the rear.

Tenure The premises are available to let by way of a new internal and repairing lease

Rent £8,000 per annum plus VAT.

Rates We understand the rates are assessed as follows:- Rateable Value (2017—present) £4,812.00



Total area: approx. 67.1 sq. metres (722.3 sq. feet)

This floor plan is a guide only
Plan produced using PlanUp.



rogersandcompany.co.uk

24 Bath Street Frome Somerset BA11 1DJ

t. 01373 454 335 e. info@rogersandcompany.co.uk